

Seattle Youth Symphony Orchestra
2019-2020 Orchestra Audition Excerpts
Tuba

Play only the bracketed sections in the following excerpts, some pieces will have more than one excerpt:

Gershwin, George – An American in Paris

Hindemith, Paul – Symphonic Metamorphosis on a Theme by Carl Weber

Prokofiev, Sergei – Symphony No. 5, Mvt. I

Wagner, Richard – Die Meistersinger, Overture

FOR EDUCATIONAL PURPOSES ONLY

**MUSIC IS PROVIDED BELOW, PLEASE USE
THESE COPIES**

AN AMERICAN IN PARIS

for Symphony Orchestra

GEORGE GERSHWIN

Edited and Revised by
F. Campbell-Watson

Tuba

Allegretto grazioso

① 3 ② 8 ③ *Vigoroso* 3 *Giocoso* 4

④ 8 ⑤ 8 ⑥ 8 ⑦ 4 *Vivo* ⑧ 8 1 5 1

mf *f* *animando e cresc.* *a tempo*

⑨ *Grazioso* 3 ⑩ 8 ⑪

mf *f* *Con umore* ⑬ 8 ⑭ 9 *mf* ⑮ *Con brio*

p *poco rit.* *a tempo* *f* *Solo* ⑯ *Solo*

mf ⑰ *Giocoso* ⑱ 6 ⑳ 3

⑲ *Molto meno mosso* 8 ⑳ *Subito animato* 4 *fz-p cresc.* *f* *sfx-p cresc.* *f*

p ㉑ ㉒ *Con fuoco* 9 ㉓ *Calmato* 4

1 1 1 1 ㉔ 4 1 1 1 2 ㉕ 5 ㉖ 8

Piu mosso *Con moto*

㉗ *Un poco più agitato* 5 ㉘ *Tranquillo* 3 ㉙ *Subito con brio*

rit. *mf* ㉚ 3

©1929 & 1930 by NEW WORLD MUSIC CORPORATION
Copyrights renewed

INTERNATIONAL COPYRIGHT SECURED Publisher member of ASCAP ALL RIGHTS RESERVED
The making of any unauthorized adaptation, arrangement or copy of this publication,
or any part thereof, is an infringement of the Copyright Law.

Property of

SUPPLIED ON LOAN ONLY

Hindemith - Symphonic Metamorphosis

144 *mf* *f* **I**

152 *ff*

151

Detailed description: This block contains three staves of musical notation. The first staff (bass clef) starts at measure 144 with a dynamic marking of *mf*. It features a melodic line with various intervals and rests. A dynamic marking of *f* appears at measure 148. A boxed letter 'I' is placed above the staff at measure 150. The second staff (bass clef) continues the melodic line, with a dynamic marking of *ff* at measure 152. The third staff (bass clef) shows a more rhythmic, accompanimental line, ending with a double bar line at measure 151.

Turandot, Scherzo

Moderato ($\text{♩} = 132$) Tacet **H** 1. Pos. *f*

79

87 **I** 5 92 *f*

96 **J**

104 *mf* **K**

113 **L** *f*

121 **M** 5

118

Detailed description: This block contains seven staves of musical notation. The first staff (bass clef) is marked *Moderato* with a tempo of $\text{♩} = 132$. It begins with a Tacet bar. At measure 79, a boxed letter 'H' is placed above the staff, followed by the marking '1. Pos.' and a dynamic marking of *f*. The second staff (bass clef) starts at measure 87 with a dynamic marking of *f*. It contains boxed letters 'I' and '5' above the staff, and a dynamic marking of *f* at the end. The third staff (bass clef) starts at measure 96 with a boxed letter 'J'. The fourth staff (bass clef) starts at measure 104 with a dynamic marking of *mf* and a boxed letter 'K'. The fifth staff (bass clef) starts at measure 113 with a boxed letter 'L' and a dynamic marking of *f*. A large bracket spans from measure 113 to 121. The sixth staff (bass clef) starts at measure 121 with a boxed letter 'M' and a dynamic marking of *f*. The seventh staff (bass clef) starts at measure 118 with a dynamic marking of *f* and a boxed letter '5' above the staff.

N

126 *f* *ff*

131

O

137

P tenuto

143 *ff*

al tempo

Q

3 Pos.

151 *mf*

R

173 *p* *mf*

S

181 *f* *p* *mf*

189 *f*

195 *ff*

T

205

13

U

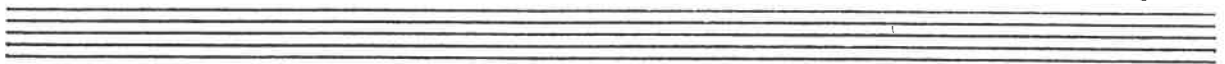
13

(231)

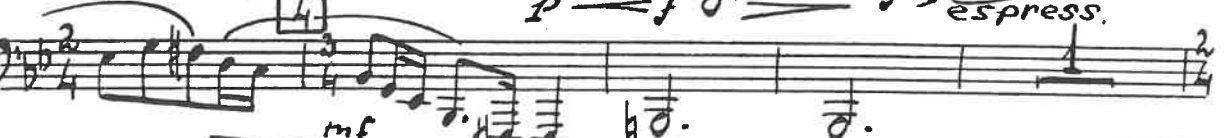
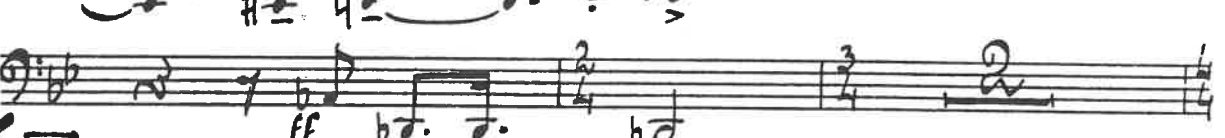
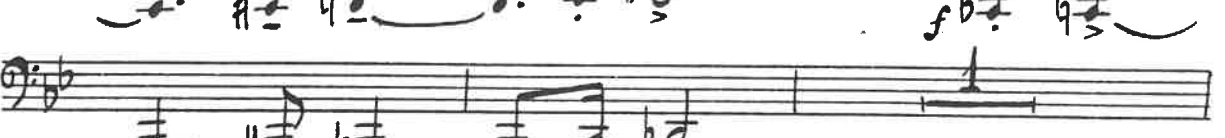
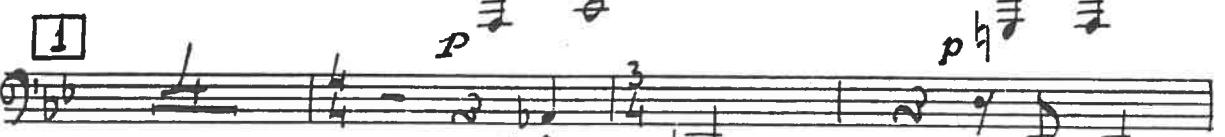
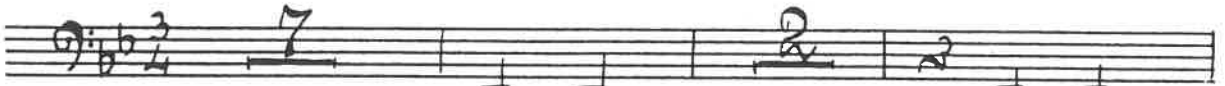
202

SYMPHONY No. 5

S. PROKOFIEFF. Op. 100



Andante



Tuba

mf *pesante*

5

mp *f*

f

mf *poco più mosso*

6

dim. *p*

7

V-ni

8 *Tempo!*

9 *f*

dim. poco a poco *mf*

mp

calando

10 *Tempo!*

p

Orchestral Excerpts:

2) WAGNER Die Meistersinger

Molto moderato mosso

